



# ***Agility***<sup>™</sup> **Equipment Controllers**

●  
Make the right control moves at the right time with *Agility* stand-alone refrigeration equipment controllers.



[logix-controls.com](http://logix-controls.com)

## Four different equipment controllers. One stand-alone solution for success.

Agility's equipment-specific controllers are ready "out of the box." They are field configurable from any wireless Wi-Fi or Ethernet connected web browser device such as a smart phone, tablet, or computer.

Scalable from a single unit to a large, distributed control system, Agility™ network features support entire

refrigeration system monitoring and control from a central computer, SCADA, or PLC platform.

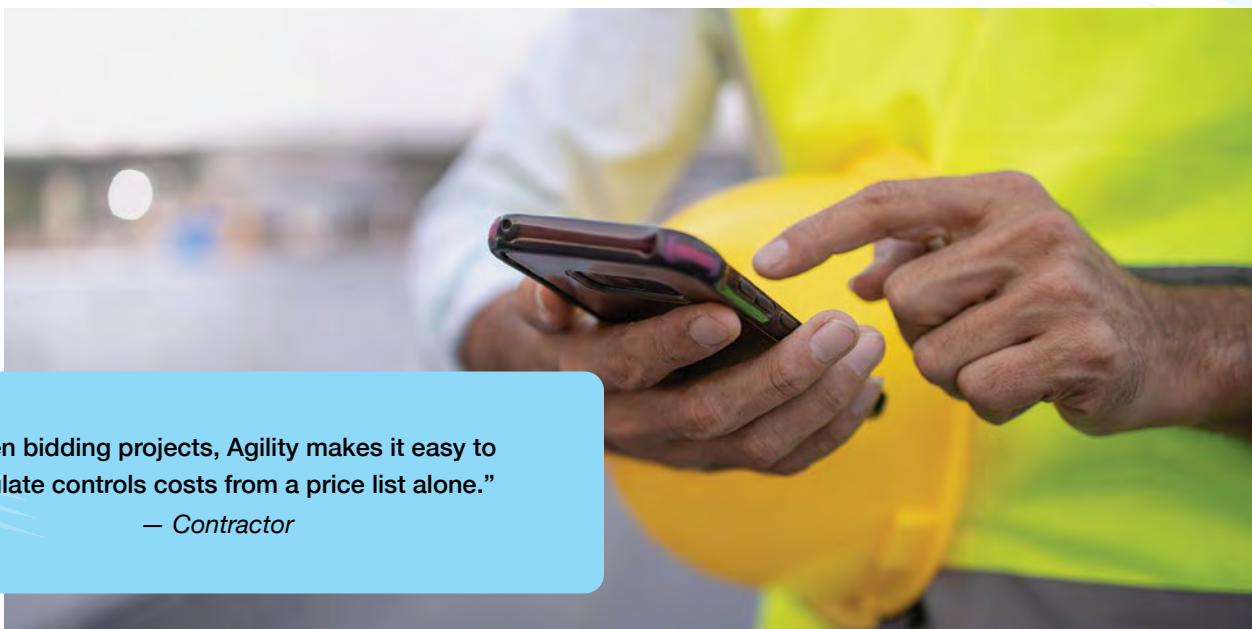
Agility is easily integrated into the Logix Axiom III control platform for plant-wide refrigeration equipment coordination, energy efficiency and demand management.

### Benefits

- Utilizes Logix's Clarity refrigeration management software
- Cost-effective solutions for modernizing existing facilities
- Built on proven Axiom™ technology, suitable for harsh industrial environments
- Animated hi-def graphics adjusts to match field configuration changes
- Web browser graphical operator interface for use with PCs, tablets, laptops, and smart phones
- "Plug 'n Play" easy field configuration and set up
- Field updatable through USB port to keep current with refrigeration technology
- Online help and documentation (wiring, installation, setup & operation)

### Common Features

- Networked (via ethernet or wireless Wi-Fi) into a distributed control system
- Open Modbus (Serial RTU & Ethernet) Monitoring and control communications for third-party PLC or SCADA integration
- Four 4-20ma analog inputs & two 4-20ma analog outputs
- Eight 120VAC solid-state digital relays (digital inputs/outputs)
- Isolated digital relays, RS-485 serial port and analog outputs for harsh industrial environments
- UL listed for industrial control
- 12" x 12" x 7" UL Listed Type 4 Enclosure
- Optional panel mounted 7" color touchscreen display available



**"When bidding projects, Agility makes it easy to calculate controls costs from a price list alone."**

— Contractor

## Agility™ Condenser Controller

- Supports wet-bulb approach pressure control
- Provides user-adjustable equipment lead list, modes and control settings with cold temperature protection
- Controls fans (VFD and single-speed) and pumps, monitors fan faults, and energizes alarm annunciator
- Sensor Inputs include condenser pressure, outside air temperature and relative humidity, plus an optional condensate temperature

## Agility™ Vessel Controller

- Control one vessel with two refrigerant pumps
- Monitor a continuous level and maintain vessel level
- Auto backup pump control and anti-cavitation protection for two pumps
- Emergency shutdown input and alarm output
- Integral 24VDC power for motorized feed valve (Danfoss, Parker R/S and Hansen types)



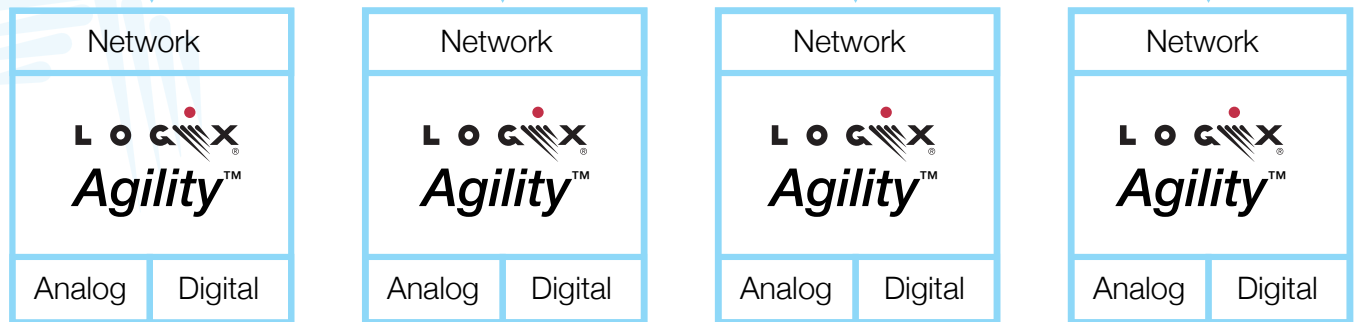
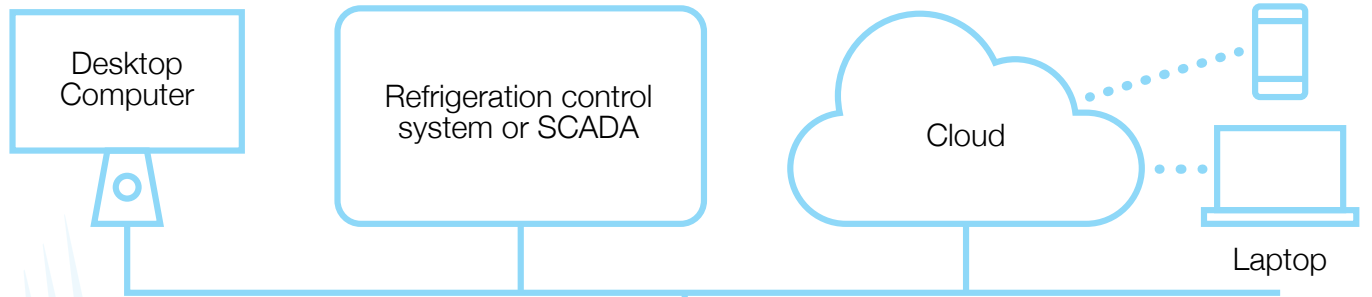
## Agility™ Evaporator Controller

- Supports a variety of defrost valve configurations and allows for user-customized valve configurations
- Fan cycling and VFD Fan speed control
- Modulated DX liquid valve with superheat option
- Controls valves, fan (VFD and single-speed), and alarm annunciator
- All valves field configurable as open or closed when energized
- Sensor inputs include return air temperature, plus suction temperature and pressure for optional motorized or pulse width DX superheat control (contact Logix for stepper valve control)

## Agility™ EPCS Controller

- Designed to comply with IIAR-2 Appendix I
- Overpressure bypass control
- Controls for two suction zone systems
- Power and pressure trip pilot lights for at-a-glance status
- Pressure transducer protection provided
- Alarm output to a remote monitored location
- Flexible trip pressure adjustment

Smart Phone

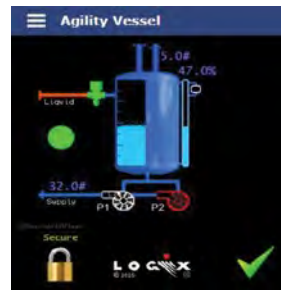


**Condenser Controller**

**Evaporator Controller**

**Vessel Controller**

**EPCS Controller**



“Agility helps me stay within budget while positioning our facility for future control needs.”

— Warehouse Manager



logix-controls.com

10518 NE 68th Street, Suite 103 • Kirkland, WA 98033 • 425.828.4149