

Logix[®] Screw Compressor Control System

straightforward user setup in the field, easily adapts to most compressor designs

The Logix Screw Compressor Control System (CCS) features online Help and documentation, a color touch screen displaying real-time status and user-defined setpoints.

The Logix Screw Compressor Control System (CCS) is an industrial-grade controller featuring Pro-Stat[®] color graphics status screen, online Help and documentation, powerful ramp start and capacity control options and much more.

- Off-the-shelf set-up offers users field configurability. Instantly adapts to the compressor control requirements of all major manufacturers.
- Optionally supports VFD motors and modulated liquid injection valves.
- Integrates into any control system using Open Communications Protocol.
- Uses the proven Logix Axiom processor with an open-source Linux operating system that circumvents vendor obsolescence.



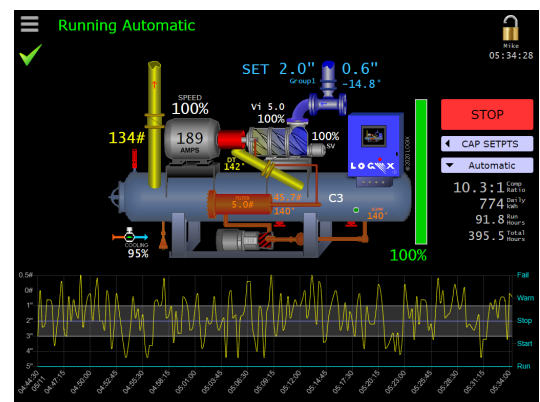
Rugged and reliable, powerful, uncomplicated

The Logix Compressor Control System (CCS) is a field proven replacement microprocessor from the industry's only independent producer of compressor controllers. The Logix CCS controls all major compressor manufacturers' equipment. Through its open communications protocol, the Logix CCS can be integrated with any control system. In production and supported since 1992, our CCS units are upgradeable and don't require complete panel replacement.

Pro-Stat[®] real-time graphics, color plotting, simple shortcuts

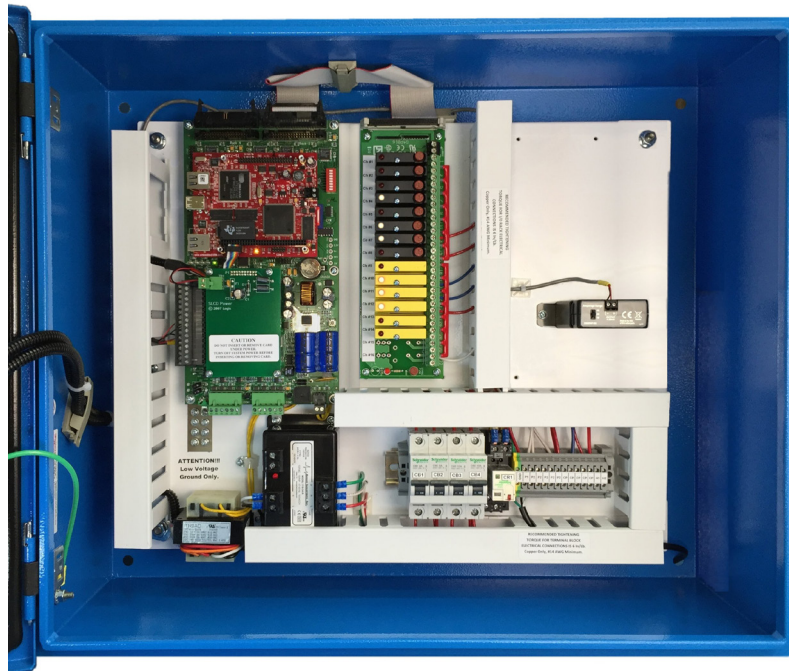
Continuously updated with the most important operating information in real time, the Logix CCS automatically returns to the Real-Time Graphics screen after ten minutes of inactivity.

The generous Pro-Stat[®] screen combines at-a-glance, real-time status, color plotting and intuitive shortcuts.



Additional Logix CCS Program Features

Field Configuration	easily change control set up to match your compressor
Sensor Span Adjustment	allows the use of any third-party sensor
Plot Trend Data	plot any sensor data, including slide valve % and motor amps
Control, Alarm and Failure Setpoints	all setpoints user-defined (with factory-set limits)
Multiple Setpoint Control	up to four setpoints with daily and weekly setpoint scheduler
Ramp Limited Starting and Unloading	allows gradual start-up and prevents overloading
Operating Modes	manual, automatic (local and remote), and auto sequence
Operating Logs	logs all compressor data for prior 48 hours of operation
Alarm and Failure Logs	displays the prior 100 events with date, time and description
Password Restricted Access	assigns up to eight authority levels and logs user access



"Logix CCS compressor panels are among the best when considering retrofitting any screw compressor package. They have become a "go to" product for many of our clients. Its no nonsense interface, reliable hardware, ease of installation and competitive price point make it a top choice. Not to mention great support direct from people familiar with the product and process."

Kenny Ragan
ColdFlow Mechanical
(Geyserville, California)

ITEMS SUPPLIED WITH EACH LOGIX CCS

- 1 — Microprocessor panel in a water-resistant rated enclosure, with a color touch screen display and door mounted E-Stop switch
- 1 — Standard Screw Compressor Control Software
- 4 — Pressure Sensors (Discharge, Suction, Oil, Oil Differential)*
- 4 — Temperature Sensors (Discharge, Suction, Oil, Oil Separator)
- 1 — Current Transmitter (Motor Amperage signal processing - Motor Current Transformer supplied by others)

**Slide valve potentiometer with 4-20 ma or 1-10 volt dc signal, panel mounting bracket, sensor tubing, wiring and fittings are supplied by others.*