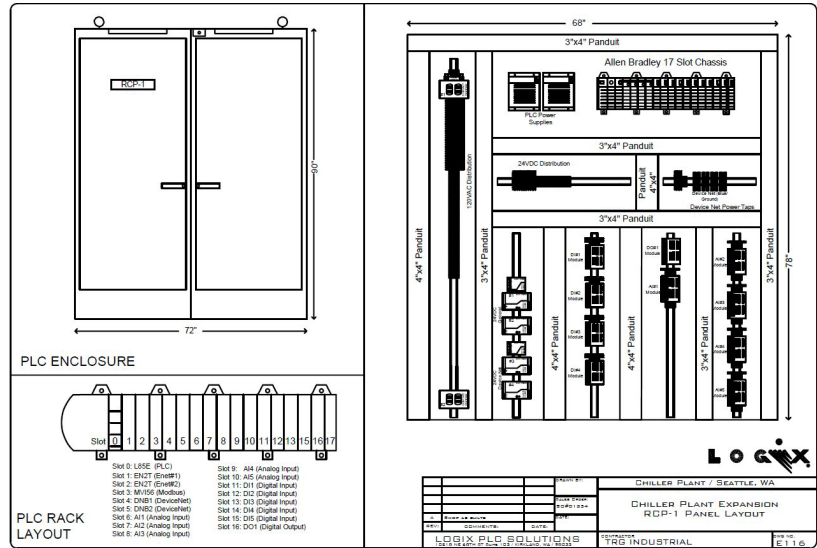


**Benefits and Features**

# Logix® PLC Solutions



*Come to Logix for your PLC-based solution and benefit from industry-leading expertise in the technology of your choice.*

**Your life just got easier. Profit from Logix's refrigeration expertise and turnkey delivery while adhering to your enterprise control standards. Win-Win!**

**The technology choice is yours, but the refrigeration aptitude and rock-solid support are always included.**

**Sidestep regulatory headache with industry-leading integrated gas detection and response.**

**Functionality, reliability, cost-effectiveness and long service life make Logix the logical choice.**

**Logix gives you Freedom of Choice**

With Logix, you have two technology paths to leverage our industry-leading capability and expertise. Our standalone Axiom™ platform has already set performance standards and established itself across multiple sectors. Now, with this Logix custom-tailored PLC solution, you can couple your investment in established control platforms with the key control, safety and efficiency capabilities that have made Logix the shrewd choice in the industrial refrigeration market.

Opt for either our Axiom platform or this new and innovative addition to our Logix portfolio to best meet 100% of your company's objectives and realize your facility's full potential.

**Benefits and Features:**

Custom tailored industrial refrigeration control systems for facilities of any size, be it new construction or an expansion project:

- Current Allen-Bradley® CompactLogix® and ControlLogix® technology maximizes future expansion ease
- Rockwell FactoryTalk View® HMI
- UL-compliant control panels
- Factory Acceptance Test assures turnkey reliability
- Proven, high-quality Logix sensors included

We collaborate with you to create a detailed specification for control strategies, listing all points monitored and controlled. Our commissioning and planning by seasoned experts eliminates worry and costly delays.

Come and partner with Logix and leverage 30 years of industrial refrigeration controls expertise. Our door is wide open.

